



The Money Tree

By Robert Watson

Relaxed Guide - January 2022

**Roseneath
Theatre**



Introduction

Today you will be watching a recording of a play. It is not a movie. It does not have special effects, but it does have actors and props and a set. Because it is a recording of a play, you can press pause or rewind at any time. You can watch the play as many times as you like.

What is a set? A set is the background behind the actors. It is also the furniture that the actors sit or stand on throughout the play. Sets help us to know where and when the play takes place. In this play the same set is used for every scene, but different things are added or taken away to represent different places or things (the laundry is added to represent home and the bench for the school yard).

What are props? Props are anything that the actors hold - like Simon's wand, or Sasha's lunch-bag. Props help the actors to tell us the story of the play.

How to RELAX Your Viewing Experience

If you are watching the play from home or at school there are lots of ways you can relax your environment to enjoy the play more. Below are some things you can do whether watching with a class or with your family/household:

- if watching virtually (from home) with your class turn your microphone and camera off and hide self-view
- put on comfy clothes
- grab your favourite pillow, blanket and stuffy, you can even pet your animal friend!
- sit on a chair, walk around, dance to the music - do whatever feels right while watching
- vocalize - feel free to make sounds during the play - clap, laugh, sigh - whatever you need to do to share how you feel
- eat! grab a snack, eat lunch, have a drink
- adjust the sound as needed - if it is too quiet, turn it up, if it's too loud then turn it down
- turn off the lights, or leave them up at full - whichever makes you feel best
- pause, stop or rewind the play at any time - it's a recording, so watch at your own pace!
- take breaks if needed
- doodle, fidget, stim, sing - just be you!

Meet the Actors and the Characters

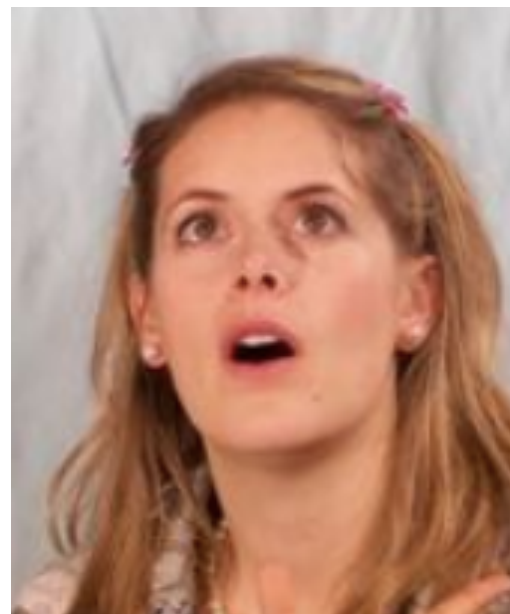
The Money Tree has three actors.

Below are photos of the actors with some information on the characters they play.



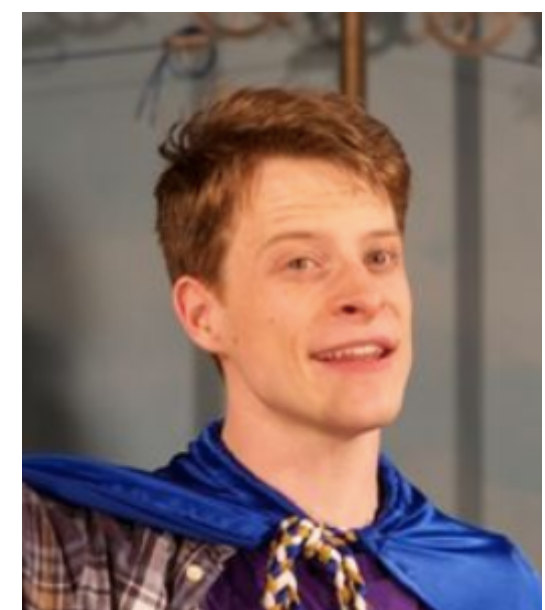
This is Rong Fu
(she/her)

She plays Shasta. It is almost Shasta's birthday and she is planning a huge party!



This is Heather Marie Annis (she/her)

She plays Katie, Mom and the Mysterious Traveller. Katie is Shasta's friend. She really wants to go to Shasta's party.



This is Joshua Stodart
(he/him)

He plays Simon and Dad. Simon loves magic! He even wears a cape and carries a magic wand.

Meet the Deaf Theatre Interpreters

Some of you may be watching the Deaf Theatre Interpreter version of the play.

The Money Tree has three Deaf Theatre Interpreters.

Below are photos of the interpreters with some information on the characters they interpret.



This is Cassie-Hope
Aubin (she/her, they/
them)

She interprets for
Shasta. It is almost
Shasta's birthday and
she is planning a huge
party!



This is Gaitrie Persaud-
Dhunmoon (she/her)

She interprets for Katie,
Mom and the Mysterious
Traveller. Katie is Shasta's
friend. She really wants
to go to Shasta's party.



This is Juan Jaramillo
(he/him)

He interprets for Simon
and Dad. Simon loves
magic! He even wears a
cape and carries a
magic wand.



What is the play about?

Shasta is excited for her birthday next week! She spends her time dreaming of her party and all the amazing things that will be there. But when Shasta's Dad loses his job, their family can no longer afford the big party she was dreaming of. Shasta is worried that none of her friends will like her when they find out.

Simon lives next door to Shasta. He loves to play pretend and helps Shasta to see that friends should like you whether you have money or not. Shasta and Simon go on a magical adventure and become good friends.

The Money Tree Fact Sheet

[Read here to find out more about the play.](#)

The play you are going to watch is called The Money Tree. It was written by Robert Watson, directed by Andrew Lamb and presented by Roseneath Theatre.

The play lasts approximately 55 minutes (including the opening and closing slides).

When it is time for you to watch the play you can sit on the floor, sit in a chair, lie down with a pillow and blanket, stand up, make sounds - whatever makes the play most enjoyable for you.

At the beginning of the video are some slides. The slides look like a stage and have writing on them. The slides can be paused if you need longer to read them.

On the bottom right of the screen is a countdown timer. It tells you how long until the play begins.

The slides last approximately one minute.

The third slide is a Land Acknowledgement. Roseneath Theatre is grateful to create and perform work on Indigenous land, that is why we give a Land Acknowledgement before each of our performances - even virtual ones! This slide appears approximately 15 seconds into the video.

The last slide before the play begins reads "Please take your seats, the show is about to begin..." - this is when you will know the play is about to start. Get ready!

Just before the play begins the screen will go red. On the screen will be the title of the play and information about who was involved in making it.

There are three actors in the play. Two of the actors play more than one role. They change costumes to let us know which character they are playing.

Sometimes the play is loud, other times it is quiet - the volume depends on the emotions that the characters are feeling.

The three main characters are Shasta, Katie and Simon. Shasta and Katie each live with their mother and father. Simon lives with his mother.

At the beginning of the play, Simon, Shasta and Katie are at school. It is lunchtime.

When Simon waves his wand magical sounds are played. The sounds can sometimes seem loud. If they are too loud you can turn down the volume on the recording, cover your ears or wear sound dampening headphones.

After Shasta and Katie leave Simon at lunch, the school bell rings and they all go into class.

Music is often played between the scenes to help show time passing.

Simon loves to play pretend. Do you like to play pretend?

Every time Simon plays pretend sounds are played. The sounds can sometimes seem loud. If they are too loud you can turn down the volume on the recording, cover your ears or wear sound dampening headphones.

Katie says some mean things about Shasta when she finds out all the “fun things” that were supposed to be at the party aren’t going to be happening anymore. Katie doesn’t understand what has happened and calls Shasta a liar. But Shasta wasn’t lying and Katie isn’t really mean. It is just a misunderstanding.

Simon and Shasta play the Lava game. Have you every pretended that the floor or ground is lava?

Simon and Shasta go on a magical adventure and meet a Mysterious Traveller.

The Mysterious Traveller is looking for a seed. The seed to a magical Money Tree.

Simon warns Shasta not to be greedy. He is not being mean.

Shasta breaks one of the rules of the Money Tree - she takes money for lots of things, but does she really need those things?

Simon breaks the other rule by taking Katie to see the tree.

When Shasta starts talking about Katie and the other girls, she realizes that Simon is a good friend to her. He likes her whether her family has money or not.

Simon reads his Parent project to Shasta. It is about his Dad. He has never met his Dad.

Shasta and Simon realize that the Money Tree was never real.

Simon and Shasta meet Katie as they walk to school. Katie is mean to Simon, so Shasta sticks up for him.

Katie apologizes to Shasta and Simon for being mean and then leaves.

Simon asks Shasta if she meant what she said. He feels happy and proud that Shasta is his friend.

Shasta leaves.

Simon does one last magic trick.

When the play is over the screen will go red. On the screen will be the title of the play and information about who was involved in making it.



Access Points for the Show

Roseneath Theatre is proud to expand our access points for The Money Tree.

Audio Description - We are excited to provide Audio Description for the play. If you require Audio Description please indicate that when registering for your link.

Deaf Theatre Interpretation - Deaf Theatre Interpreters (Deaf actors as opposed to ASL interpreters) have been filmed interpreting the script into American Sign Language for d/Deaf members of the audience. If you require Deaf Theatre Interpretation please indicate that when registering for your link.

Captions - the On Demand link comes captioned. You have the choice to turn the captions on or off.

Relaxed Guide - a Relaxed Guide has been created to help with the process of attending the show. The guide provides information on the show, photos of the Actors, Deaf Theatre Interpreters and photos from the play.



Thank you for watching
The Money Tree.
We hope you enjoyed the
play!

For more information about
Roseneath Theatre's
accessibility programs email
Rachel Marks at
education@roseneath.ca

Link to the Study Guide app

Want to learn more? Teachers, Parents and Caregivers can click on the link below for the study guide which is jam-packed with activities and information!

<https://tinyurl.com/2jvvffzv>



Credits

Cast:

Shasta

Simon/Dad

Katie/Mom/Mysterious Traveller

Rong Fu

Joshua Stodart

Heather Marie Annis

Deaf Theatre Interpreters:

Shasta

Simon/Dad

Katie/Mom/Mysterious Traveller

Cassie-Hope Aubin

Juan Jaramillo

Gaitrie Persaud-Dhunmonn

Creative Team:

Playwright

Director

Set & Costume Design

Sound Design

Stage Manager

Robert Watson

Andrew Lamb

Lindsay C. Walker

Rick Sacks

Meghan Speakman

Accessibility:

Accessibility Coordinator/Relaxed Guide

Audio Description

Additional Audio Description

ASL Consultant

Rachel Marks

Kat Germain & Jennifer Brethour

Camille Craig & Milena Khazanavicius

Sage Lovell (Deaf Spectrum)